

CHILD DEVELOPMENT 201

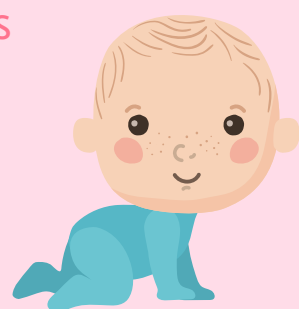


ESSENTIALS OF LANGUAGE:

- PHONOLOGY- BASIC SOUNDS OF LANGUAGE
- MORPHEMES- SMALLEST SYLLABLES
- SEMANTICS- RULES THAT GOVERN LANGUAGE

4 TYPES OF ATTACHMENT:

- SECURE- CHILD IS CONNECTED TO A CAREGIVER.. HAS THE ABILITY TO CALM DOWN WHEN SEEN
- AVOIDANT- A LOT MORE ABOUT STAYING AWAY FROM ATTACHMENT BECAUSE PARENTS ARE INCONSISTENT/UNAVAILABLE
- AMBIVALENT- HARD TIME WHEN CAREGIVER LEAVES.. THEN HAPPY, INCONSISTENT
- DISORGANIZED-DISORIENTED- MIXED WITH EVERYTHING, CHAOTIC



LANGUAGE DEVELOPMENT:



- SYNTAX- HOW WE COMBINE WORDS AND PHRASES
- FAST-MAPPING- NEW WORD OR IDEA COMES OUT WITHOUT HEARING IT ONCE OR TWICE
- PRIVATE SPEECH- KIDS ARE SITTING BY THEMSELVES TALKING OUT LOUD
- PRAGMATICS- WAY THAT WE USE LANGUAGE IN A SOCIAL SETTING, IN SOCIAL SITUATIONS
- SOCIAL SPEECH- SPEECH DIRECTED TOWARDS OTHERS

FAMILY RELATIONSHIPS:

- STRANGER AND SEPARATION ANXIETY- KIDS ARE PRONE TO FEAR THINGS THAT ARE NOT FAMILIAR TO THEM
- HARRY HARLOW'S EXPERIMENT- TOOK A BABY MONKEY AND MADE 2 FAKE MOTHERS.. THE MONKEY WENT TO THE CLOTHED MOTHER
- MOTHER AND FATHER DIFFERENCES- MOTHERS ARE MORE RESEARCHED THAN FATHERS



PARENTING STYLES



- AUTHORITARIAN- PUNISHMENT, RIGID, STATUS, AUTOCRATIC
- AUTHORITATIVE- GUIDELINES, ASSERTIVE, FLEXIBLE, HIGH STANDARDS
- UN-INVOLVED- NEGLECT, DISTANCE, ABSENT, UNINTERESTED
- PERMISSIVE- NON-DIRECTIVE, NO GUIDELINES, LENIENT

THREATS DURING PREGNANCY

- TERATOGENS- ANYTHING NEGATIVE TO HARM SOMEONE
- DIET- PROBLEMS WITH GROWTH AND DEVELOPMENT (MALNUTRITION)
- AGE- YOUNGEST/OLDEST MOST PROBLEMS DURING PREGNANCY
- PRENATAL SUPPORT- DENIAL OF PREGNANCY (NO CARE)
- DRUG AND ALCOHOL USE- MARIJUANA, ALCOHOL, CAFFINE

